

The Goldfish Mask (Size S/M and L) for The Free Mask Project of Vancouver May 31, 2020

To make a 3-layer Halyard 300 or 400 mask:

Fold a double layer of Halyard 400 and cut the pattern piece through all 4 layers; repeat, and set a single layer set (1 left side, 1 right side) aside for the next mask. Place three layers together for both left side and right side.

To make a 2-layer H500-650 mask:

Fold double layer of Halyard 500-650, same colored sides together, and cut one pattern piece through all 4 layers.

Cut a double layer piece of Halyard $3\frac{3}{4}$ x 2" for nose channel.

Cut a strip 2" x 26" wide through a double layer of Halyard, separate layers, join together at narrow ends to create one long 2" strip for the tie. If you cut 2 of these double layer strips you can make one entirely blue tie and one entirely white one.

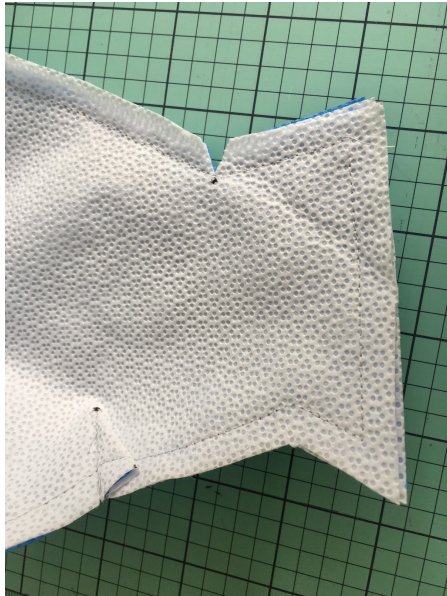
MASK BODY:

1. Use a pen to mark pivot point at the tip of notches ($\frac{3}{8}$ " from top edge and $1\frac{3}{4}$ " from ear sides), and dart edges and points (point measures 1" from bottom edge).
2. Use a pen to mark the nose piece placement points (marked A on pattern) on exterior blue sides of mask.
3. Place 3 layer stack for one side of mask on top of 3 layer stack for other side of mask, blue exterior sides together; stitch $\frac{3}{8}$ " nose to chin seam, through all 6 layers.
4. Trim inner 4 layers close to seam; stitch 2 outer layers of seam allowance together to encase trimmed bulk.



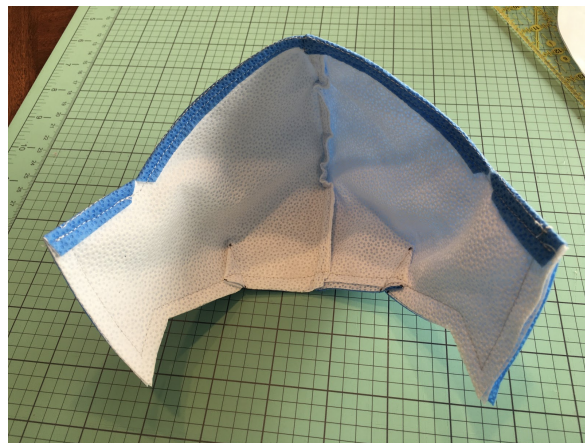
5. With wrong side of mask facing up, fold darts, stitch from raw edge to point where marked. Back tack at both raw edge and point.

6. Stitch $\frac{3}{8}$ " seam all the way around mask body, pivoting at stitched seam of darts and ensuring darts are pointing away from centre bottom. If white layers slip a little bit, trim to make raw edges even with blue layer.



7. Clip large notch point ($1\frac{3}{4}$ " from ear edge) to just inside of the $\frac{3}{8}$ " stitching of the outer layers - this will allow for proper folding without pulling in step 8. Cut outermost lining layer close to stitching along top edge of mask to lessen bulk.

8. Fold over top of mask along $\frac{3}{8}$ " stitching line and top stitch $\frac{1}{8}$ " along entire length of top of mask, ear to ear; notches will allow for perfectly flat seam.



9. With the inside of the mask facing up, centre the $3\frac{3}{4}$ x 2" double layer nose piece channel between the placement markers ("A" on the pattern), blue side facing up, raw edges of nose piece even with folded over raw edge. Stitch $\frac{1}{8}$ " along entire length of channel piece, back tacking at beginning and end.

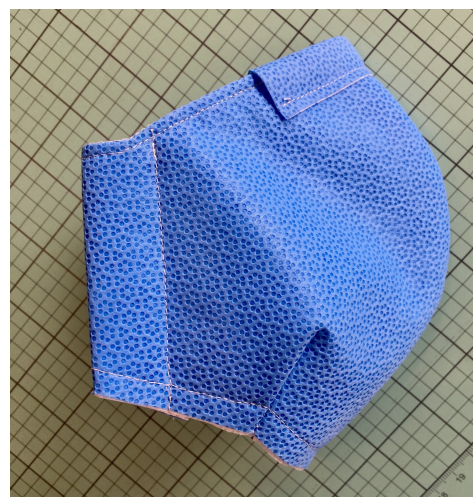
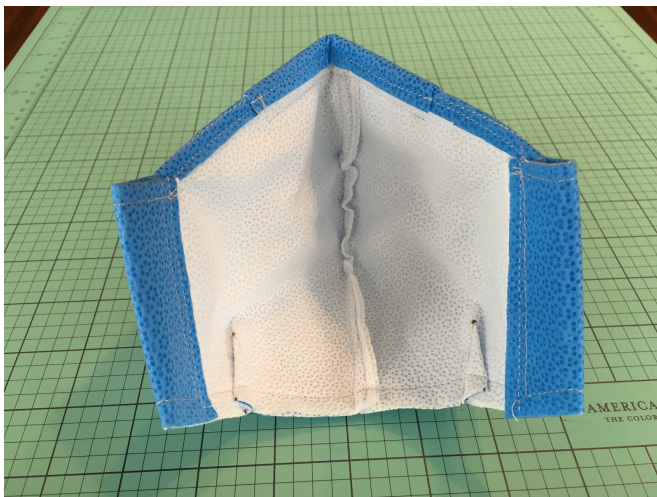


10. Fold nose piece flap over to the front of the mask, (it's wider than necessary for ease of handling and will be cut to size at the end of this step). Stitch $\frac{1}{8}$ " along narrow end for $\frac{1}{2}$ ", leaving needle in the fabric, lift presser foot, pivot mask, put presser foot down, and stitch $\frac{1}{2}$ " casing to the other end, back tack, leaving narrow end open. Flip excess up and cut close to seam.



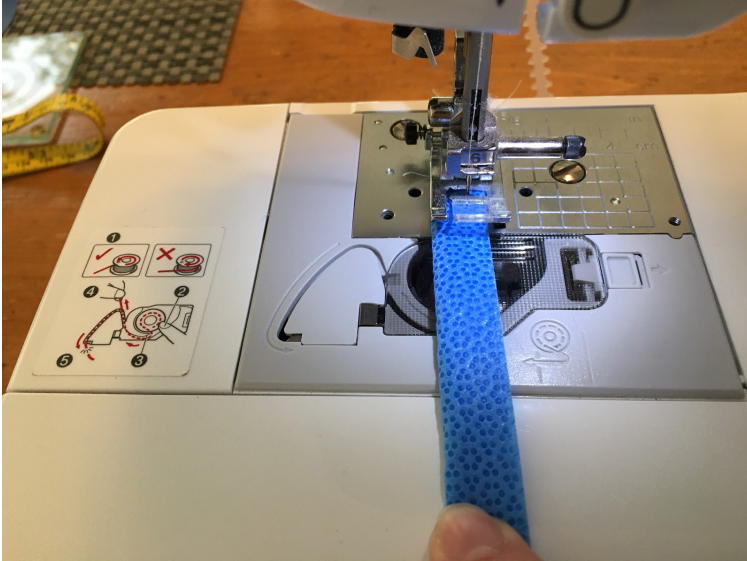
11. Insert metal nose piece and bend in centre. Do not close the channel opening as nose piece wire/metal can't slip out after it's bent. Leaving the channel open could allow for nose wire/metal to be easily removed and reused after the mask has been through the maximum allowable sanitation cycles.

12. On ear side of mask, fold over fish tail to the inside of the mask (1" along fold line) the tail will align with body of mask; stitch $\frac{3}{4}$ " seam from top to bottom to create channel for tie; repeat on other side.



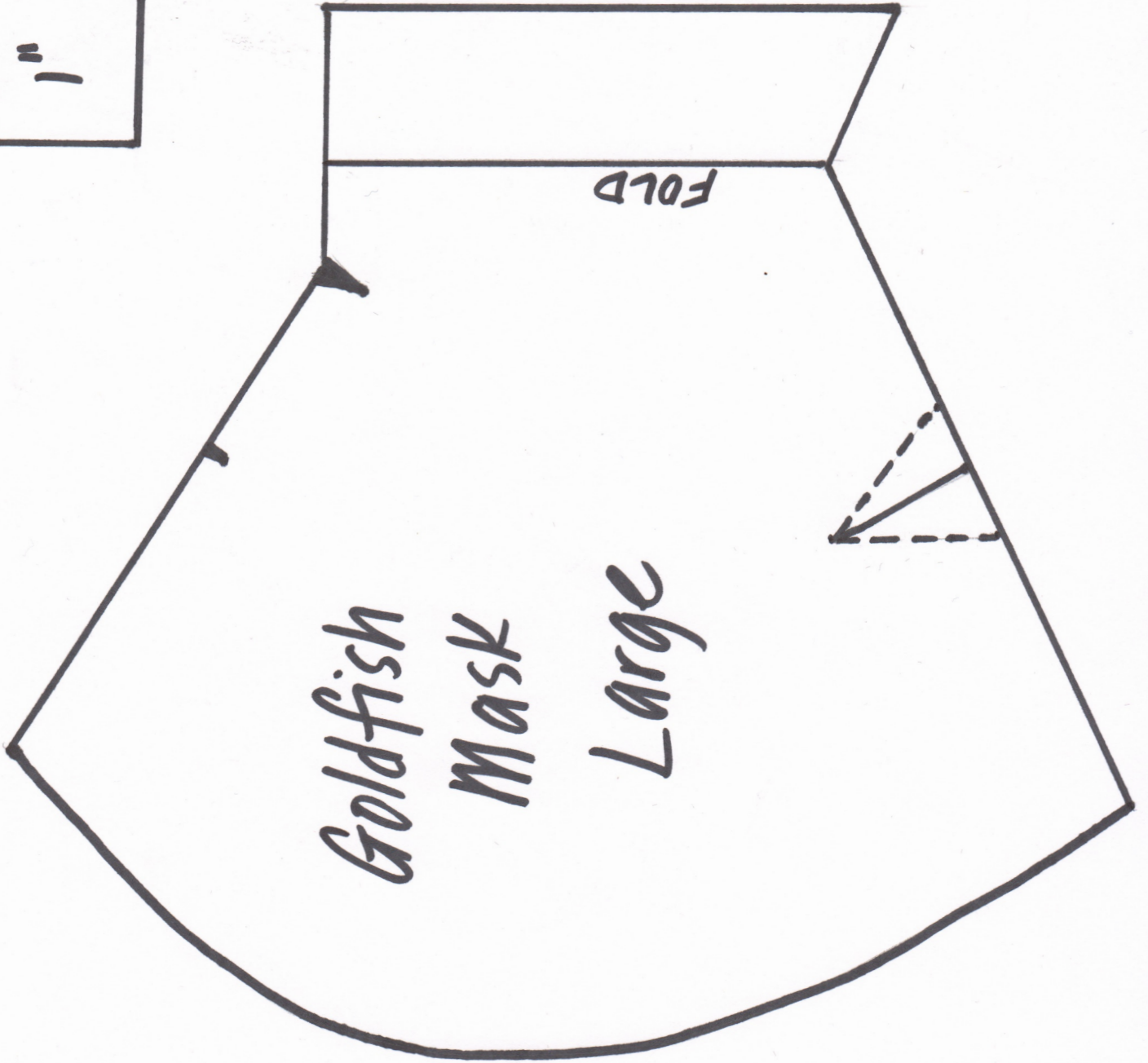
TIE:

Working with 6" to feed into your machine, fold in half and then in half again to create 1/2" wide strip, using a straight stitch, 1/8" from edge, sew the entire length, double folding as you go (this is easier than it sounds); when you reach the end, stitch across the narrow edge and then up the entire length and across the narrow edge to the starting point.



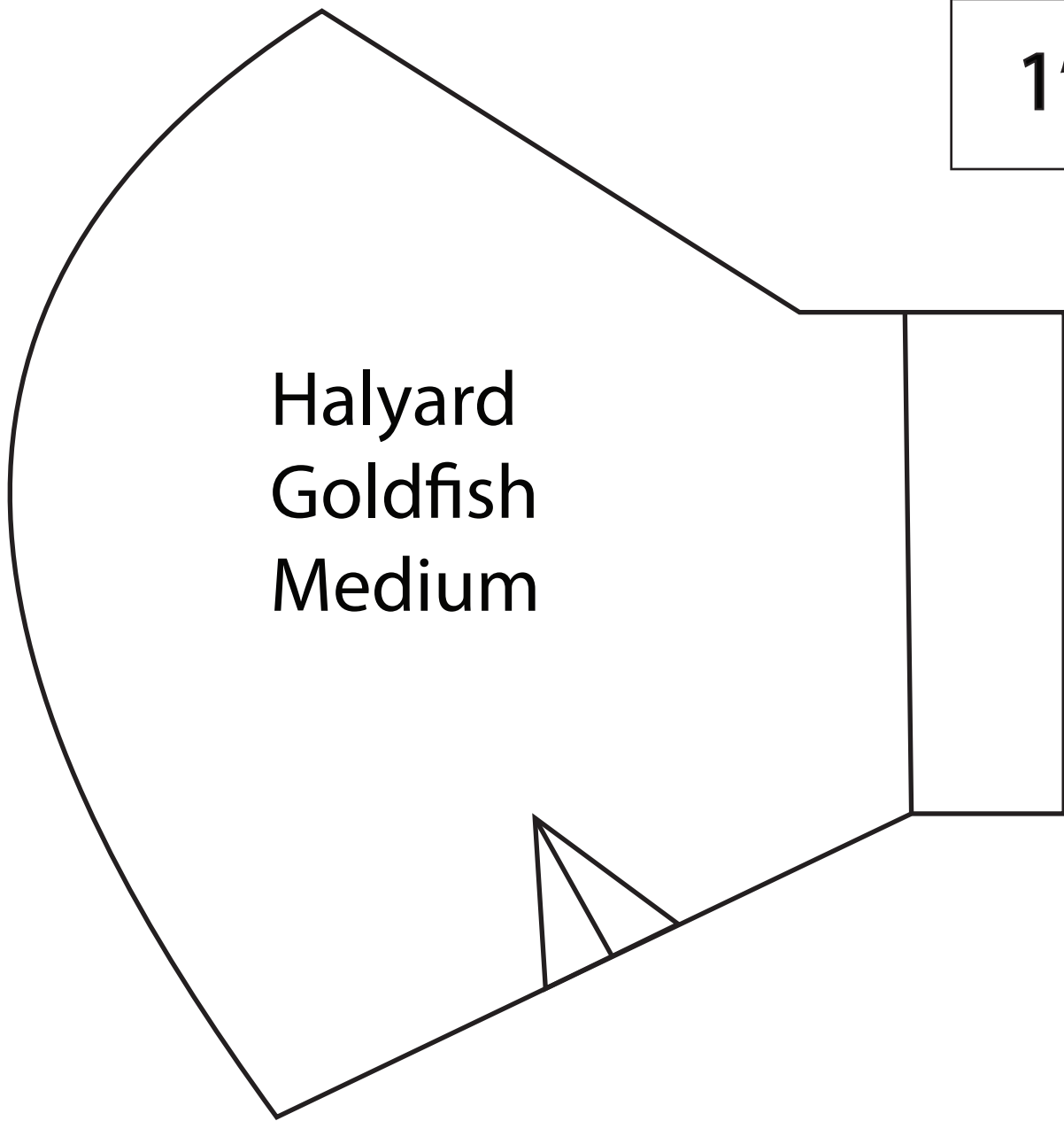
Feed the tie up through the casing at bottom of one side of mask, and down through the top of the other side. **Completed!**

The mask Information is provided with permission for the recipient to freely use, copy and modify without restriction, subject to an obligation on the recipient to recognize Barbara Roden and The Free Mask Project of Vancouver as the source of the information and design depicted in this material. The mask Information is experimental in nature and the safety or efficacy for use in humans has not been proven. The design, and masks built in accordance with the design, have not been approved by Health Canada. DISCLAIMER: THE MASK INFORMATION IS PROVIDED "AS-IS, WHERE-IS," WITHOUT REPRESENTATIONS, CONDITIONS OR WARRANTIES OF ANY KIND, WHETHER EXPRESS OR IMPLIED, INCLUDING, BUT NOT LIMITED TO, WARRANTIES OF MERCHANTABILITY OR FITNESS FOR A PARTICULAR PURPOSE, OR THAT THE USE OF THE MASK INFORMATION WILL NOT INFRINGE ANY PATENT, COPYRIGHT, TRADEMARK OR OTHER PROPRIETARY RIGHTS. THE RECIPIENT IS SOLELY RESPONSIBLE FOR DETERMINING THE APPROPRIATENESS OF USING, REPLICATING OR REDISTRIBUTING THE MASK INFORMATION AND DESIGN. IN THIS REGARD, THE RECIPIENT ASSUMES ALL LIABILITY FOR DAMAGES, OF WHATEVER NATURE AND DESCRIPTION, WHETHER IN CONTRACT OR IN TORT, WHICH MAY ARISE FROM THE USE OF THE MASK INFORMATION AND DESIGN. THE FREE MASK PROJECT OF VANCOUVER, INCLUDING ITS EMPLOYEES AND AGENTS, WILL NOT BE LIABLE TO THE RECIPIENT OR TO ANY THIRD PARTY FOR ANY LOSS, CLAIM OR DEMAND MADE BY THE RECIPIENT, OR ANY LOSS, CLAIM, DEMAND OR JUDGMENT AGAINST THE RECIPIENT BY ANY OTHER PARTY, DUE TO OR ARISING FROM THE USE OF THE MASK INFORMATION AND DESIGN BY THE RECIPIENT.



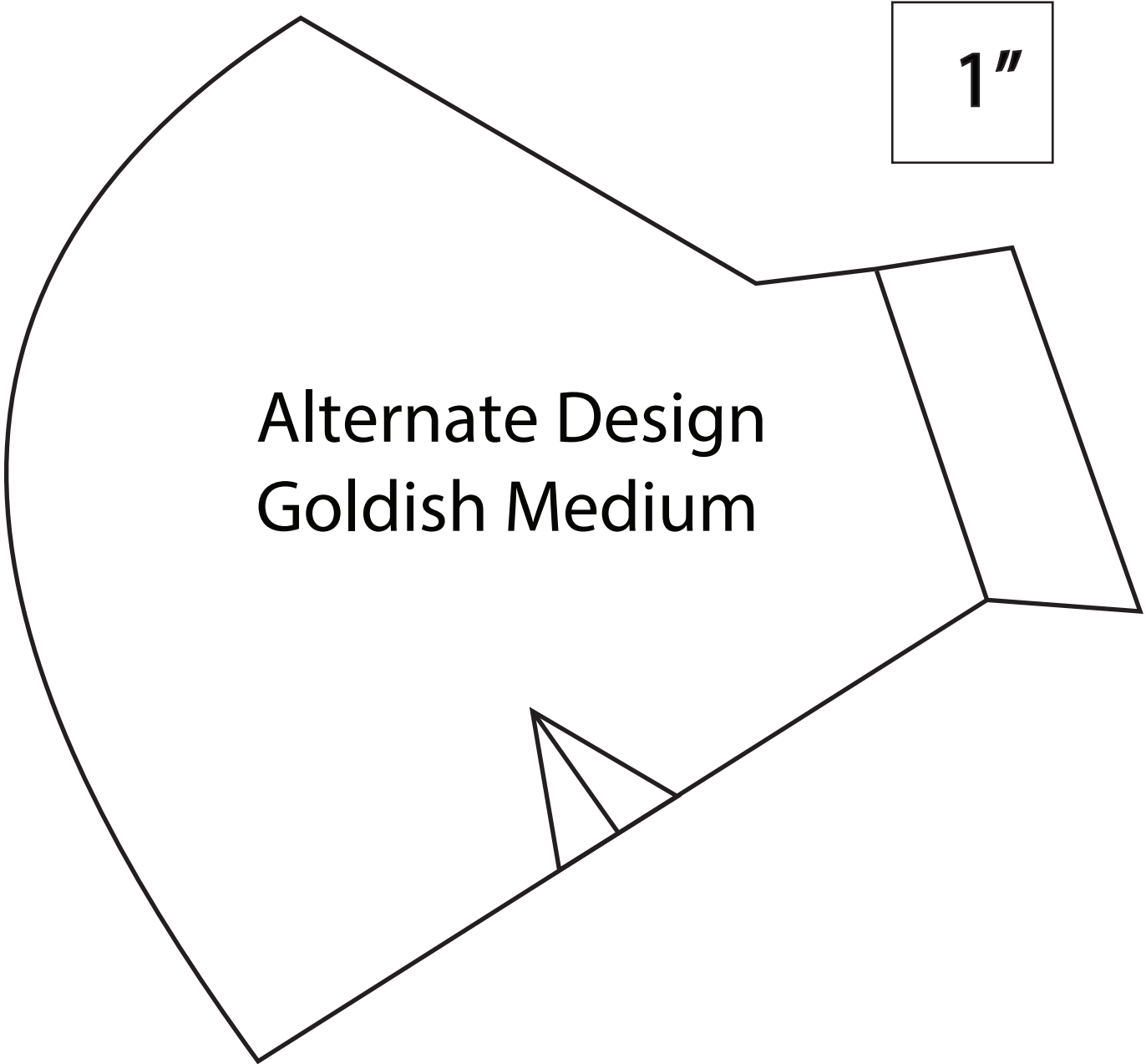
FOLD

Goldfish
Mask
Large



Halyard
Goldfish
Medium





1"

Alternate Design
Goldfish Medium